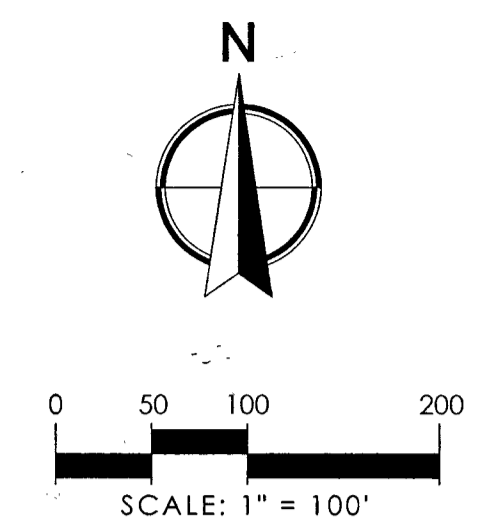
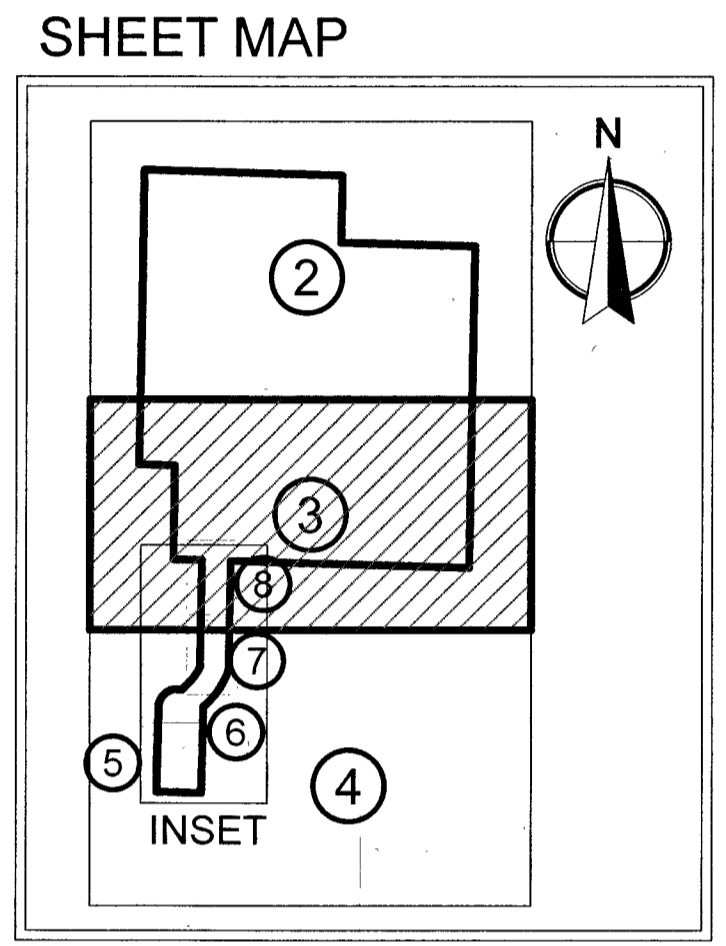


CENTRAL PARK COMMERCE CENTER MUPD

BEING A PORTION OF SECTIONS 29 & 32, TOWNSHIP 43S, RANGE 40E PALM BEACH COUNTY, FLORIDA

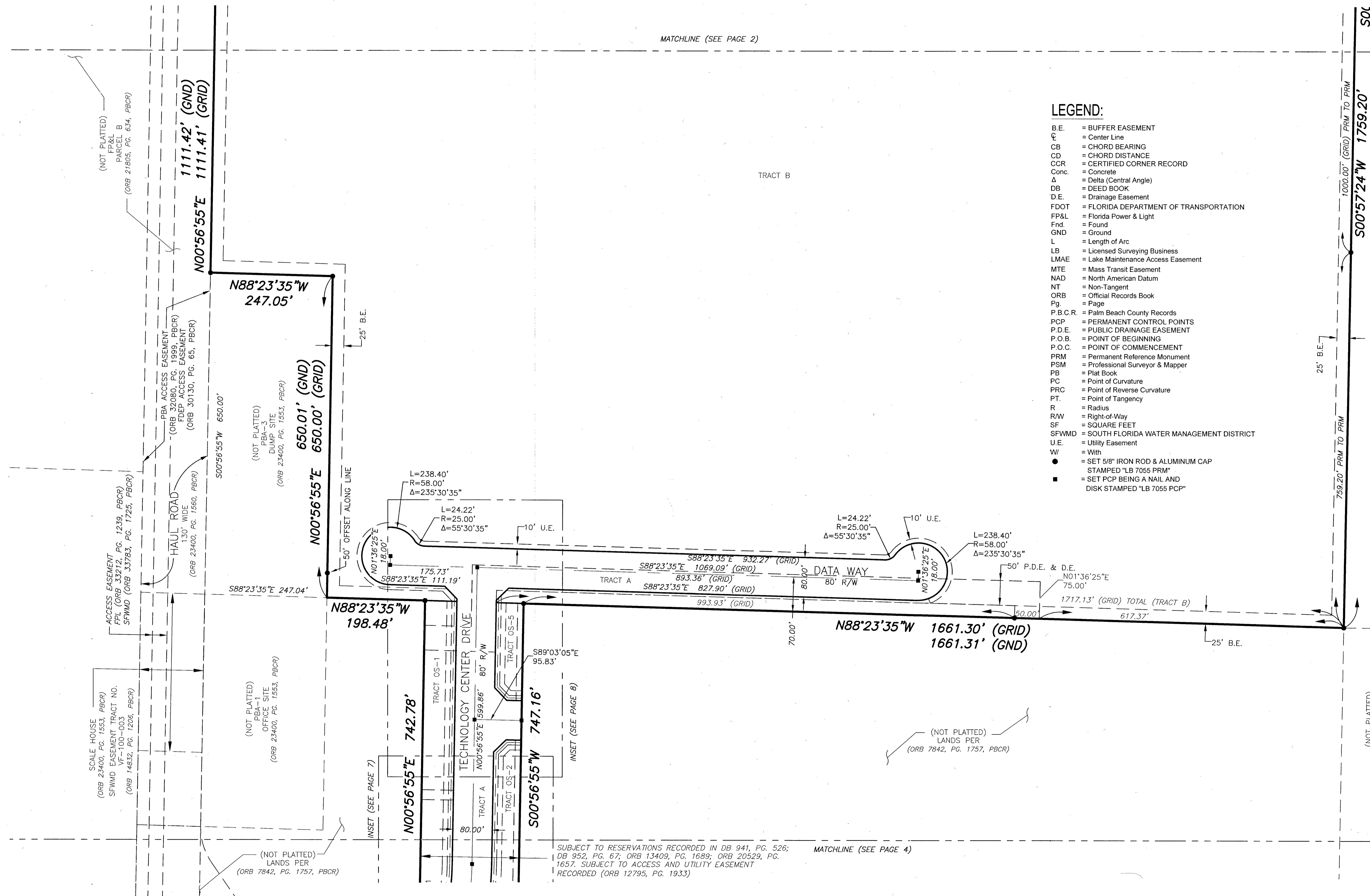


MATCHLINE (SEE PAGE 2)



LEGEND:

- B.E. = BUFFER EASEMENT
- CL = Center Line
- CB = CHORD BEARING
- CD = CHORD DISTANCE
- CCR = CERTIFIED CORNER RECORD
- Conc. = Concrete
- Δ = Delta (Central Angle)
- DB = DEED BOOK
- D.E. = Drainage Easement
- FDOT = FLORIDA DEPARTMENT OF TRANSPORTATION
- FP&L = Florida Power & Light
- Find. = Found
- GND = Ground
- L = Length of Arc
- LB = Licensed Surveying Business
- LMAE = Lake Maintenance Access Easement
- MTE = Mass Transit Easement
- NAD = North American Datum
- NT = Non-Tangent
- ORB = Official Records Book
- Pg. = Page
- P.B.C.R. = Palm Beach County Records
- PCP = PERMANENT CONTROL POINTS
- P.D.E. = PUBLIC DRAINAGE EASEMENT
- P.O.B. = POINT OF BEGINNING
- P.O.C. = POINT OF COMMENCEMENT
- PRM = Permanent Reference Monument
- PSM = Professional Surveyor & Mapper
- PB = Plat Book
- PC = Point of Curvature
- PRC = Point of Reverse Curvature
- PT. = Point of Tangency
- R = Radius
- R/W = Right-of-Way
- SF = SQUARE FEET
- SFWMMD = SOUTH FLORIDA WATER MANAGEMENT DISTRICT
- U.E. = Utility Easement
- W = With
- = SET 5/8" IRON ROD & ALUMINUM CAP STAMPED "LB 7055 PRM"
- = SET PCP BEING A NAIL AND DISK STAMPED "LB 7055 PCP"



(NOT PLATTED)
SFWMMD TRACT 2, PARCEL 2
(ORB 14832, PG. 1206, PBGR)

(NOT PLATTED)
SFWMMD TRACT NO. VF-100-007
(ORB 21362, PG. 1076, PBGR)
(ORB 21362, PG. 1081, PBGR)

SUBJECT TO RESERVATIONS RECORDED IN DB 941, PG. 526;
DB 952, PG. 67; ORB 13409, PG. 1689; ORB 20529, PG.
1657. SUBJECT TO ACCESS AND UTILITY EASEMENT
RECORDED (ORB 12795, PG. 1933)

MATCHLINE (SEE PAGE 4)

THIS INSTRUMENT WAS
PREPARED BY JIM SULLIVAN

